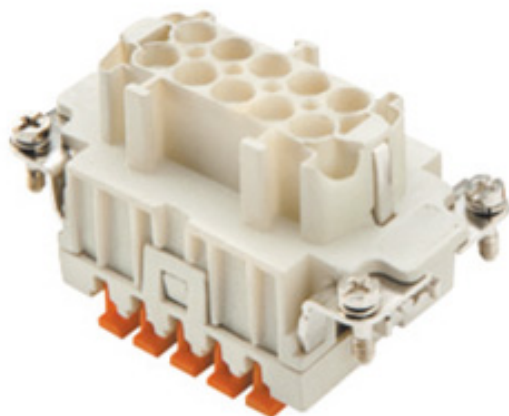






Product Sheet

Part Number: CSHF 10



Family	inserts
Version	Spring connection contacts SQUICH
Series	CSH
Product type	with female contacts
Model	female insert
Reference standard	EN 61984 (2001-11)
Contact type	silver plated
No. of poles	10 poles + 
Voltage (V)	500V
Current (A)	16A (A.C./D.C.)
Wire section	0,14mm ² - 2,5mm ²
Awg size	26 - 14
Quality mark	 600V  GOST 
IP degree of protection	IP20 degree of protection without enclosure; IP65, IP66, IP67, IP68 (EN 60529) and IP69K (DIN 40050 - 9) with enclosure

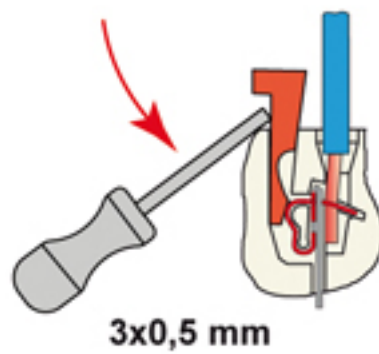
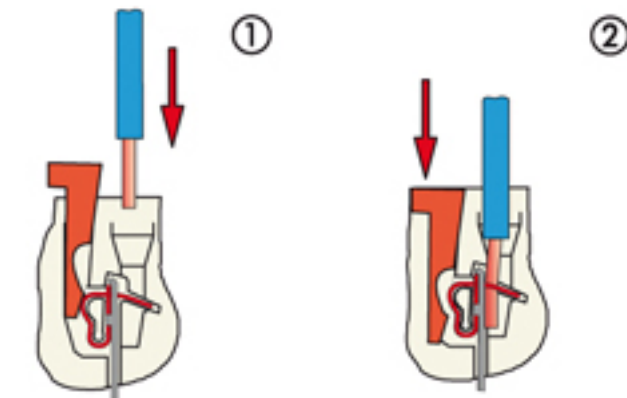
The information and the dimensions contained are not binding and may be changed without prior notice.
The drawing's dimensions are in mm.

Fixing centre distance	size "57.27"
Impulse withstand voltage	6kV
Pollution degree	3

The information and the dimensions contained are not binding and may be changed without prior notice.
The drawing's dimensions are in mm.

Notes

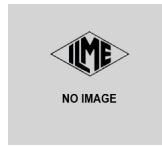
actuator button connections



Reopening

- inserts for connectors with the following sections:
0.14 - 2.5 mm² - AWG 26 - 14
- conductors stripping length: 9...11 mm

The information and the dimensions contained are not binding and may be changed without prior notice.
The drawing's dimensions are in mm.



CSHF/M 10

- characteristics according to EN 61984:

16A 500V 6kV 3

16A 400/690V 6kV 2

- rated voltage according to UL/CSA: 600V

- insulation resistance: > 10 GOhm

- ambient temperature limit: -40 °C ... +125 °C

- are made of self-extinguishing thermoplastic resin UL 94 V0

- mechanical life: > 500 cycles

- contact resistance: < 3 mOhm

- enclosures: size "57.27":

C-TYPE IP65/IP66

C7 IP67 stainless steel lever

V-TYPE IP65/IP66

stainless steel lever

T-TYPE IP65 insulating

JEI zinc-plated steel lever

BIG hoods

W-TYPE aggressive environments

EMC

central lever

IP68

- panel supports:

COB

The information and the dimensions contained are not binding and may be changed without prior notice.

The drawing's dimensions are in mm.